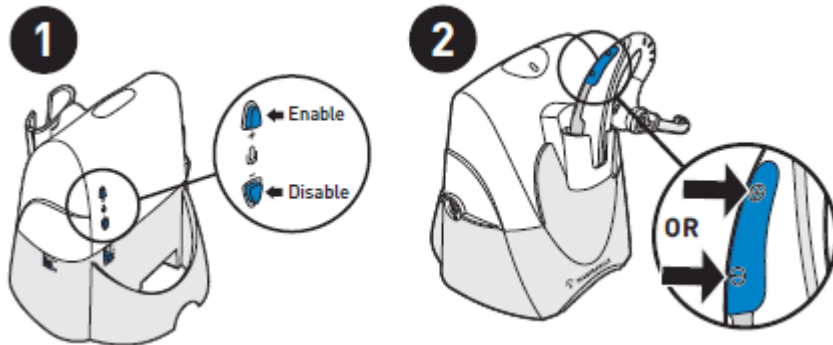


CS70N Multi-Shift Pairing, Reset, Subscription Procedures

Multi-Shift Pairing: 1
 Reset: 3
 Re-Subscribe: 4

Multi-Shift Pairing:



Multi-Shift Pairing allows you to use a second CS70N headset with your base, and swap back and forth on different shifts.

First: Charge and set up your CS70N Wireless Headset System according to instructions, and charge up the second earpiece in the Base Cradle.

Before your start, ensure the intelIStand switch on the RHS of the base is in the "up" - single bar - position, so the headset will not automatically become active when lifted from the charging base.

1. Remove the earpiece from the Base charging cradle.
2. Long press (5 sec.) the speaking volume minor adjust **up** button on back of base until the power indicator light flashes.
3. Place a charged headset in charging cradle and red indicator light on base will flash for 2 seconds if the multi-shift pairing feature is enabled.
4. Within 10 seconds of doing so, press either the "+" or "-" listening volume button for 3 seconds until the headset talk indicator lights to indicate pairing mode, and goes out after successful pairing.

Note that the alternate earpiece will no longer be subscribed, and the amber subscription LED on the unsubscribed earpiece will be flashing rapidly.

Repeat steps 1 and 2 if headset and base do not link when call control button is pressed.

NOTE: Only the last paired headset will work with the base. You must NOT be in talk mode (i.e. not on a call) when enabling or disabling this feature.



CS70N Multi-Shift Pairing, Reset and Subscription

You can now place the unsubscribed earpiece on the Base charging cradle to keep it charged for the next person to use. Note that when the inactive headset is placed on the base for charging, the active headset in use will be temporarily disconnected from its paired base unit. You will need to push the Call Control button on the headset so that it will reconnect with the base

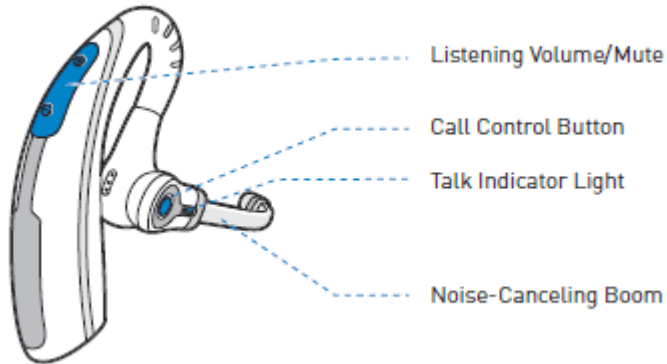
Once Multi-shift pairing is enabled, you can alternately pair each earpiece by repeating steps 3 and 4.

If the un-subscribed earpiece will not be used for an extended period, to conserve its battery charge, simultaneously select the earpiece +, - and Call Control buttons until the amber LED goes out. To subsequently subscribe it in Multi-shift Pairing mode, first place it in the charging cradle for enough time to charge it up, remove it, and then follow steps 3 and 4 to subscribe it.

To disable the multi-shift pairing feature, long press (5 sec.) the speaking volume minor adjust **down** button until the power indicator light flashes.

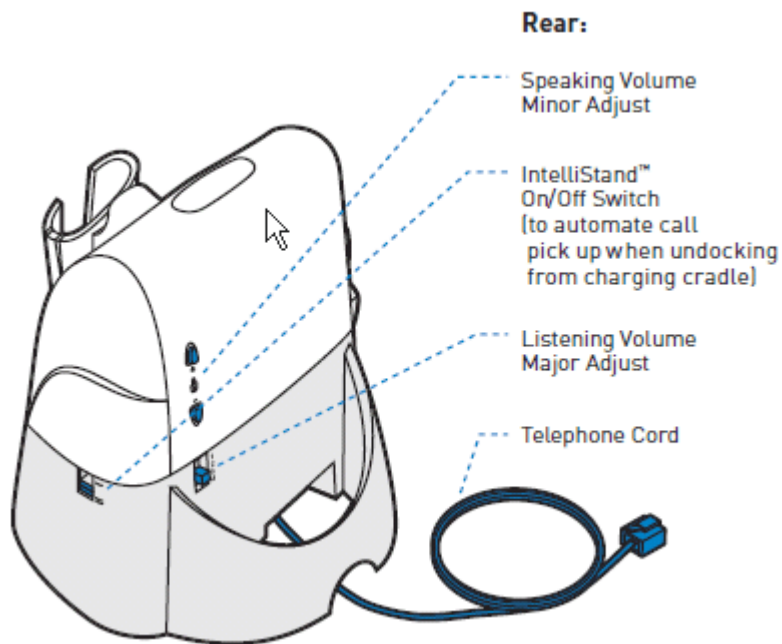
Reset:

Headset



1. Check the switch on the right side of the charging base. Set it to "-" and not "=".
2. Take the headset out of the charging base.
3. Simultaneously press & hold the call control button & the volume + and - buttons for 5 seconds.
(All of these buttons are on the headset.)
4. When the yellow light (below the call control button) on the headset blinks, release all buttons.
5. Press and hold the call control button (only) again.
The yellow light will blink a second time.
6. Release the call control button.

Re-Subscribe:



1. Press and hold the 2 triangular buttons on the back of the base (Until you get a Flashing Red light on the base)
2. Press and hold the "+" volume button on your headset (Until you get a solid amber light on your headset)
3. Disconnect the AC power cord from the bottom of the base when the Red light on the base turns solid and the amber light on the headset goes out.
4. Plug the AC power back in to the charging base.