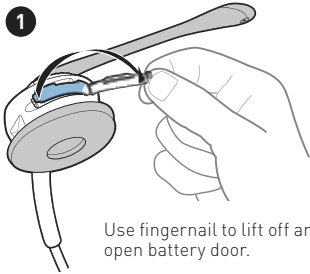




Battery Replacement: SupraPlus® Wireless

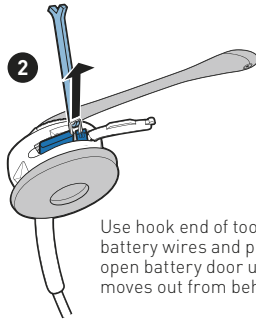
PLANTRONICS
SOUND INNOVATION™

1



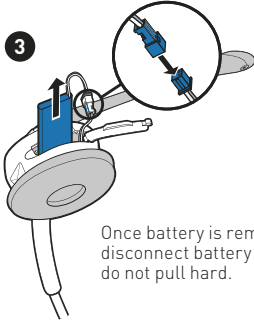
Use fingernail to lift off and flip open battery door.

2



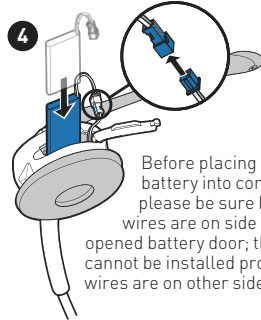
Use hook end of tool to hook battery wires and pull toward open battery door until battery moves out from behind post.

3



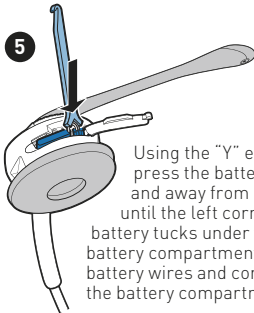
Once battery is removed, gently disconnect battery connector; do not pull hard.

4



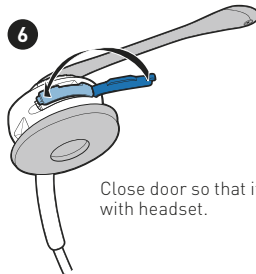
Before placing new battery into compartment, please be sure battery wires are on side closest to opened battery door; the battery cannot be installed properly if wires are on other side.

5



Using the "Y" end of the tool, press the battery backwards and away from battery door until the left corner of the battery tucks under the post in the battery compartment. Tuck all of the battery wires and connectors into the battery compartment.

6



Close door so that it is flush with headset.